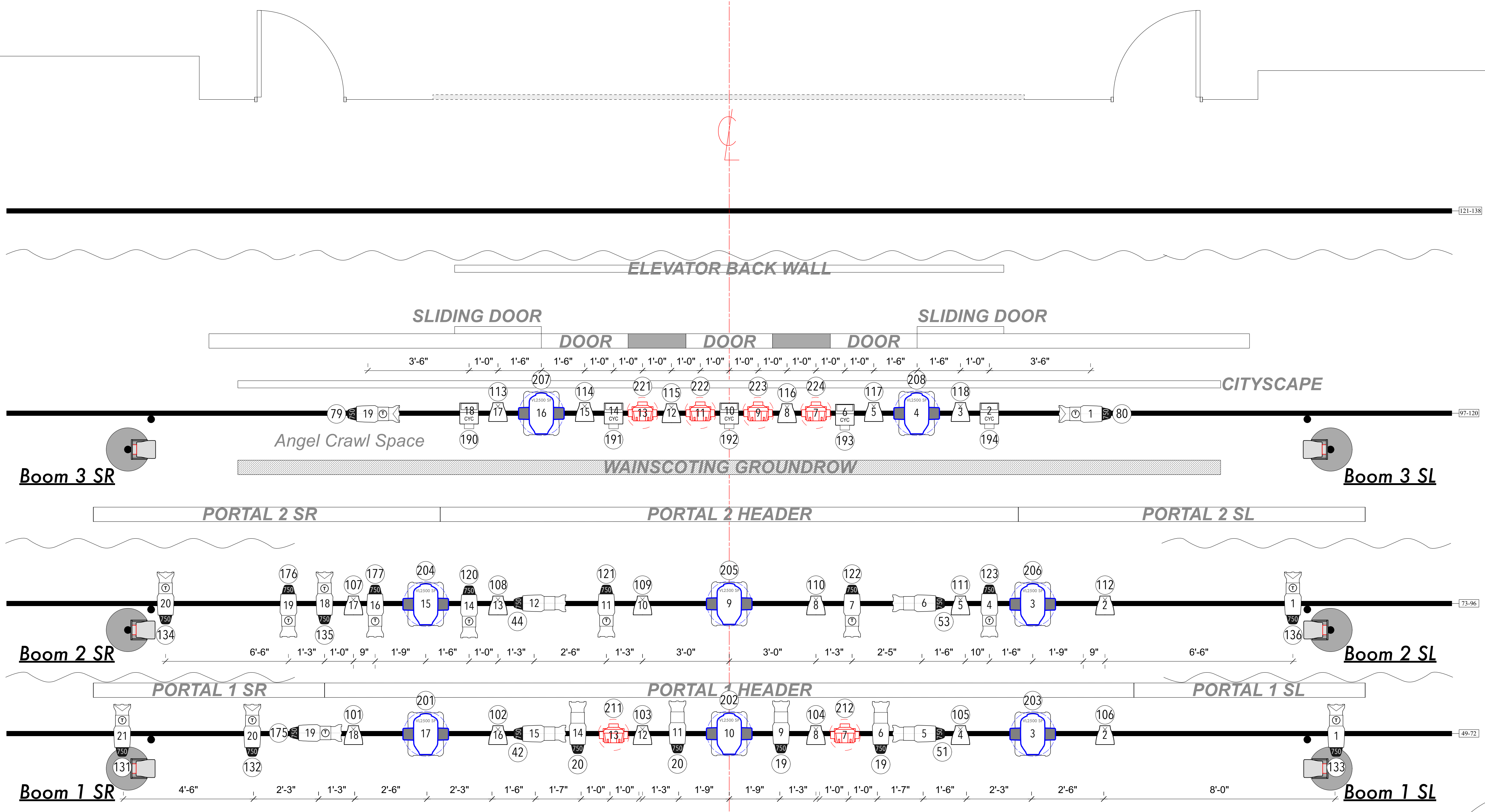


TRIM	GOODS	DIST	#
		24'-10"	20
	Cyclorama	24'-4"	19
18'-8"	Fourth Electric	23'-4"	18
	Legs & Border	21'-10"	17
	Elevator Back Wall	21'-4"	16
	ELEVATORS	18'-10"	15
	CITY-SCAPE	17'-4"	14
17'-10"	Third Electric	16'-4"	13
	Border	14'-10"	12
	PRACTICALS 2	13'-10"	11
	PORTAL 2	12'-10"	10
	Mid-Stage Traveller	11'-10"	9
16'-1"	Second Electric	9'-9"	8
	Border	8'-9"	7
	PRACTICALS 1	8'-3"	6
	Legs	7'-3"	5
	PORTAL 1	6'-9"	4
15'-10"	First Electric	5'-3"	3
	Main Drapes	2'-3"	2
	Grand Teaser	1'-9"	1
	PLASTER LINE	0'-0"	0

Fly Rail



JEREMY JOHNSON DESIGNS
MARIST
 WITHOUT REALLY TRYING™
 HOW TO SUCCEED IN BUSINESS WITHOUT REALLY TRYING™

SYMBOLS

- S4-26" @ 171w
- S4-36" @ 750w
- S4-50" @ 750w
- ColorSource Par, No Lens
- ColorSource Cyc
- Cove MX Powercore
- AURA 19x15w @ 285w
- VL-2500 Spot @ 700w

TYPICAL

Channel Template/Acc.
 Unit #

Draft by: J. Johnson
 Draft: 1/18/2022

REVISIONS:

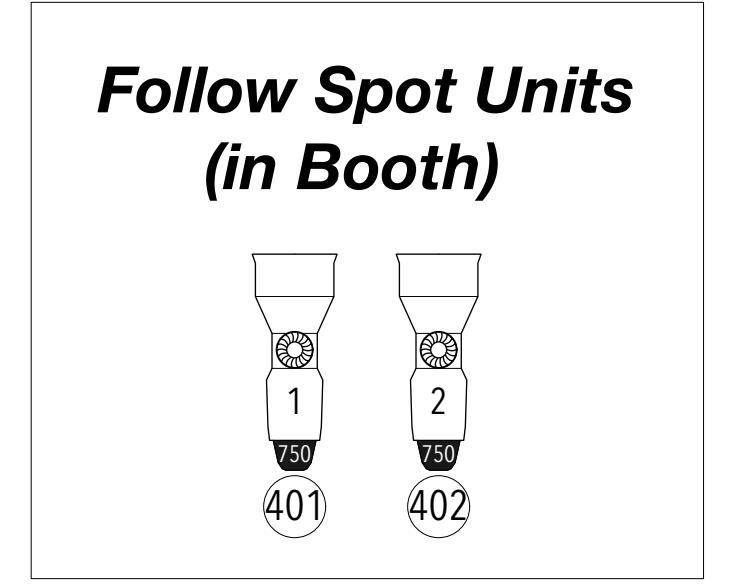
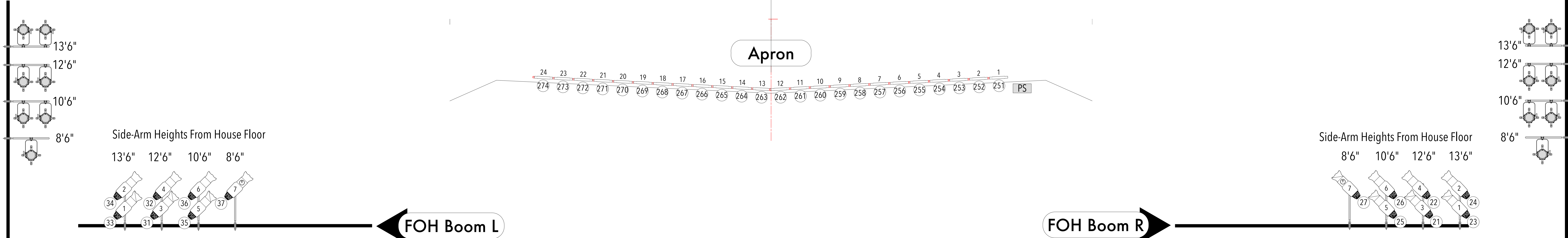
- 1/29/22.....Overheads
- 1/29/22.....Talkdowns
- 1/29/22.....H. Booms
- 1/31/22.....LX. Booms, Deck

Director: Andrew Garret Karl
 Set Design: Eileen Curley
 Lighting Design: Jeremy Johnson
 ALD: Rachel Chaffin

FOH APRON & OVERHEAD PLAN
 Scale: 1/2" = 1'

PLATE: 1 / 2

Disclaimer: These drawings represent the layout of lighting equipment and accessories only. The designer is unqualified to determine structural appropriateness of this design and will not assume responsibility for improper rigging, engineering, hanging, handling or use of this lighting equipment. All materials, hardware, and hanging techniques must comply with the most stringent applicable federal and local fire and safety codes.



JEREMY JOHNSON DESIGNS
MARIST
 WITHOUT REALLY TRYING™
 HOW TO SUCCEED IN BUSINESS WITHOUT REALLY TRYING™

SYMBOLS

- S4-19" @ 750w
- S4-26" @ 750w
- S4-36" @ 750w
- S4-50" @ 750w
- S4-10" @ 750w
- Altman 360Q 6x12 @ 600w
- Altman 360Q 6x16 @ 600w
- Cove MX Powercore @ 45w

TYPICAL

Channel Template/Acc.
 Unit #

Scale: 1/2" = 1'

Director: Andrew Garret Karl
 Set Design: Eileen Curley
 Lighting Design: Jeremy Johnson
 ALD: Rachel Chaffin

Draft by: J. Johnson
 Draft: 1/14/2022
 Revision: 3

PLATE: 1 / 2

Disclaimer: These drawings represent the layout of lighting equipment and accessories only. The designer is unqualified to determine structural appropriateness of this design and will not assume responsibility for improper rigging, engineering, hanging, handling or use of this lighting equipment. All materials, hardware, and hanging techniques must comply with the most stringent applicable federal and local fire and safety codes.